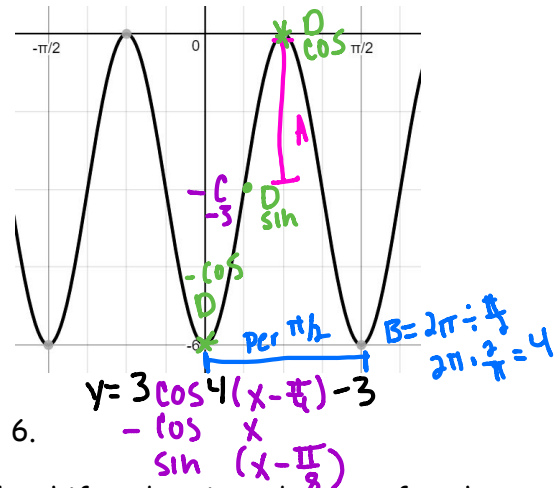
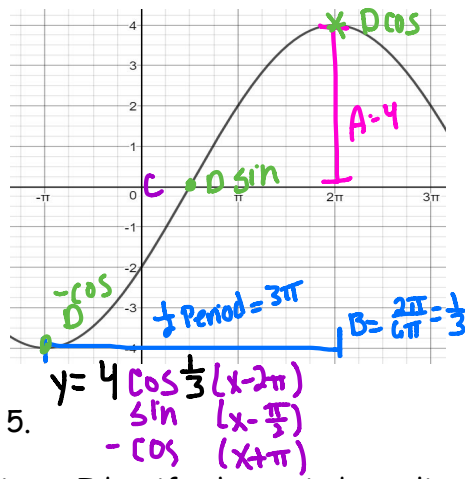
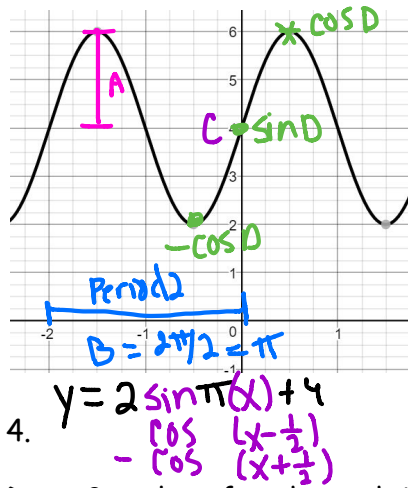
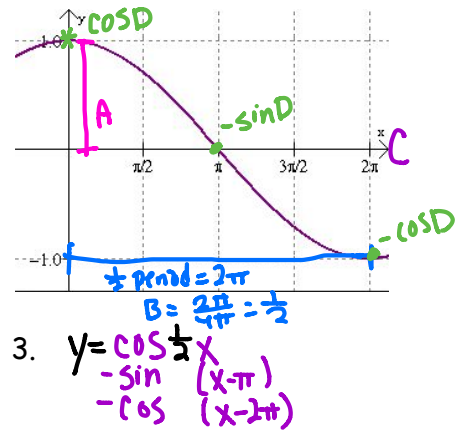
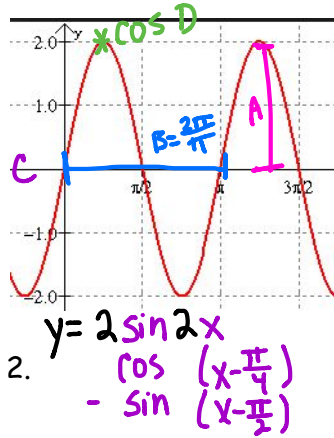
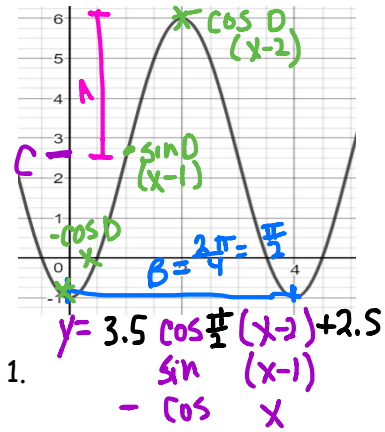


Name: _____

Graphing Sinusoidal Functions Review

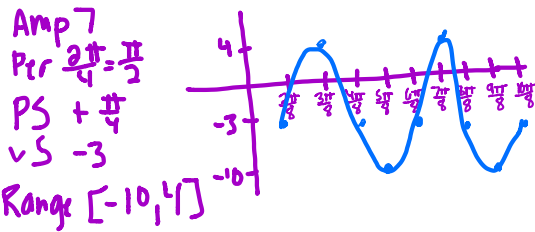
Write the equation of the graph as both sine and cosine



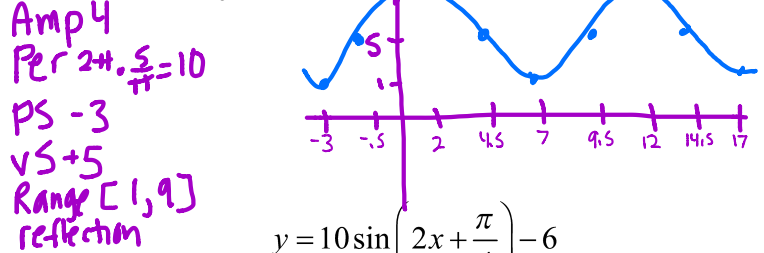
Draw 2 cycles of each graph in radians. Identify the period, amplitude, shifts, domain and range of each.

Domain of all sinusoids is \mathbb{R} or $(-\infty, \infty)$

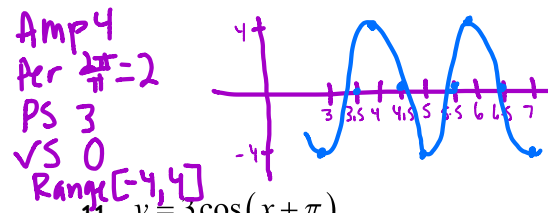
7. $y = 7 \sin 4(x - \frac{\pi}{4}) - 3$



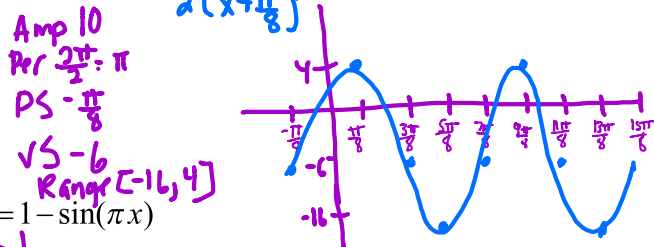
8. $y = 5 - 4 \cos \frac{\pi}{5}(x + 3)$



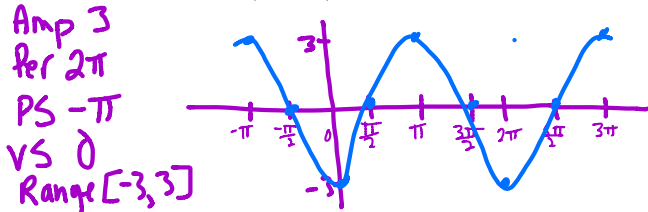
9. $y = -4 \cos \pi(x - 3)$



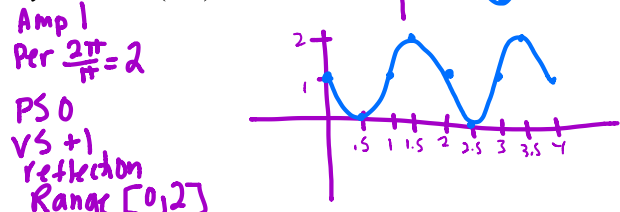
10. $y = 10 \sin \left(2x + \frac{\pi}{4} \right) - 6$



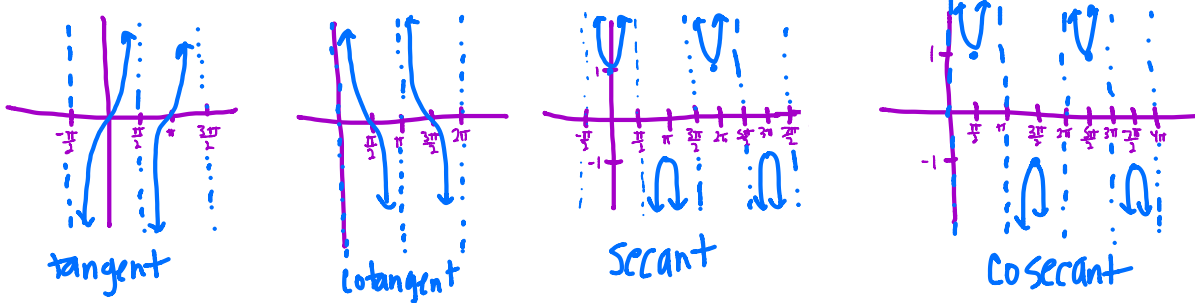
11. $y = 3 \cos(x + \pi)$



12. $y = 1 - \sin(\pi x)$

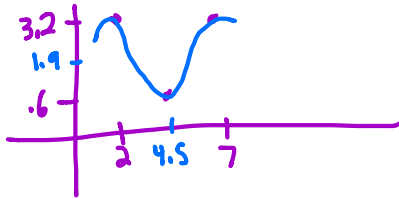


13. Draw the parent function for tangent, cotangent, secant, and cosecant



14. Assume that as you breathe, the volume of air in your lungs is a sinusoidal function of time. Suppose that at time $t = 2$ seconds, your lungs have their maximum volume of 3.2 liters. When you exhale, your lungs still have .6 liters. Your breathing rate is one complete breath every 5 seconds.

a. Draw a graph to show volume of air vs time



b. Write an equation to show volume in terms of time $y = 1.3 \cos \frac{2\pi}{5}(x-2) + 1.9$

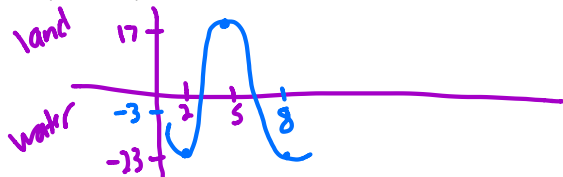
c. How much air did you have in your lungs at time $t = 0$? .848

d. Between what two positive values of t did your lungs first have no more than 1 liter of air?

$$0 < t < .141 \quad \text{or} \quad 3.859 < t < 5.141$$

15. Tarzan is swinging back and forth on his grapevine. As he swings, he goes back and forth across the riverbank, going alternately over land and water. Jane decides to model his movement mathematically and starts her stopwatch. Let t be the number of seconds the stopwatch reads and let y be the number of meters Tarzan is from the riverbank. Assume that y varies sinusoidally with t and that y is positive when Tarzan is over water and negative when he is over land. Jane finds that when $t = 2$, Tarzan is at the end of his swing, where $y = -23$. She finds that when $t = 5$, he reaches the other end of his swing and $y = 17$.

a. Sketch a graph of this function.



b. Write an equation expressing Tarzan's distance from the river bank in terms of t

$$y = 20 \cos \frac{\pi}{3}(x-5) - 3$$

c. Find y when $t = 2.8$, $t = 6.3$ and $t = 1.5$ $-16.383, 1.158, -20.32$

d. Where was Tarzan when Jane started her stopwatch?

7 ft over land

e) When was Tarzan 12 ft over land for the 3rd time?

10.310 sec